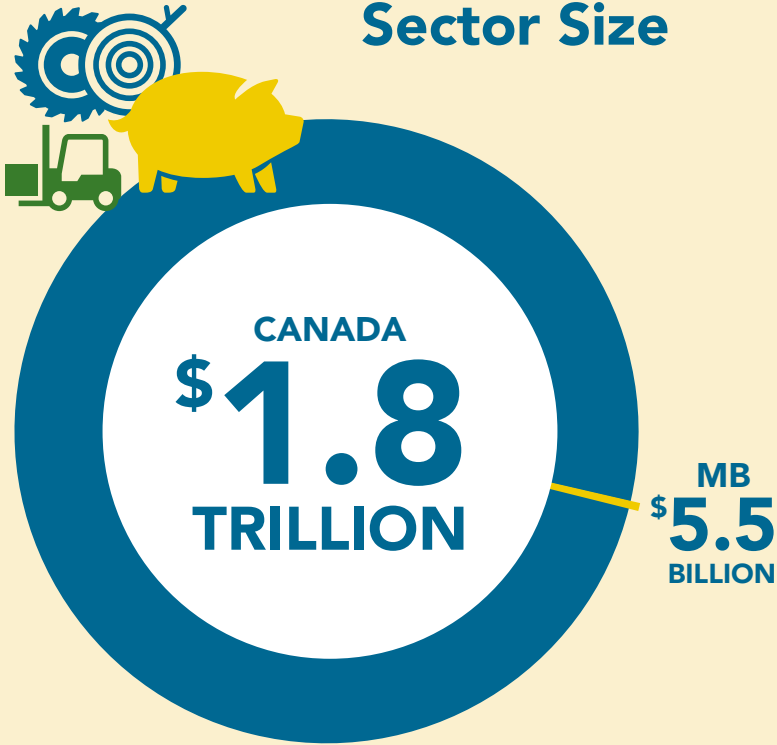


INDUSTRY SECTOR INSIGHTS

Manufacturing



Sector Size

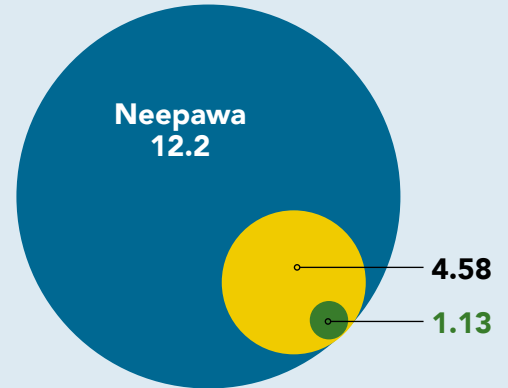


The sector contributed over **\$1.8 trillion** to Canada's overall GDP in 2017. Manitoba accounted for **\$5.5 billion** of this total.

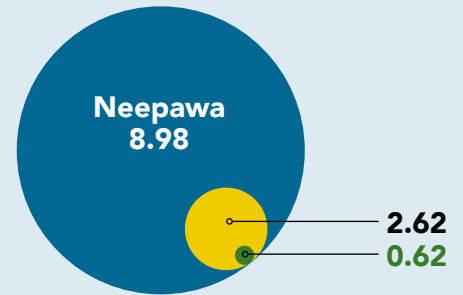
Concentration of Labour Force (2017)

Concentration of labour force relative to Canada

Food Manufacturing



Wood Product Manufacturing

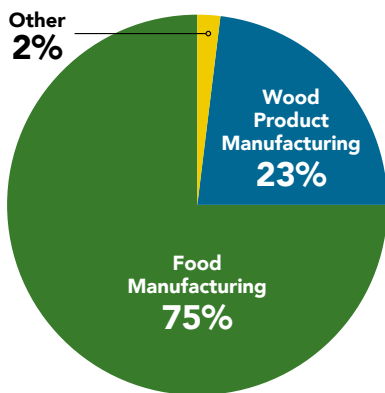


NEEPAWA CENSUS DIVISION 15 MANITOBA

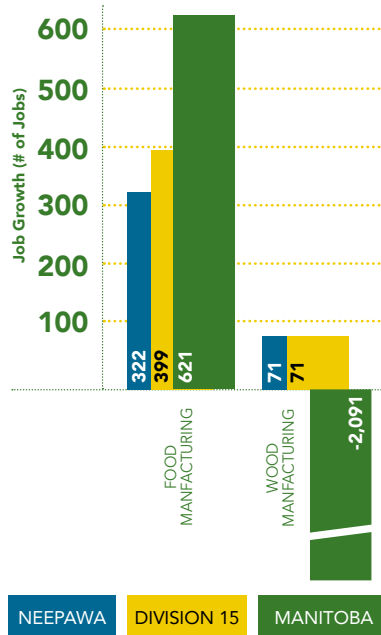
Employed Labour Force (2017)

635 Employed in Sector in Neepawa

Manufacturing Jobs by Type

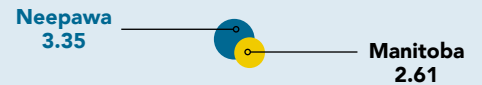


Significant Growth (2007-2017)

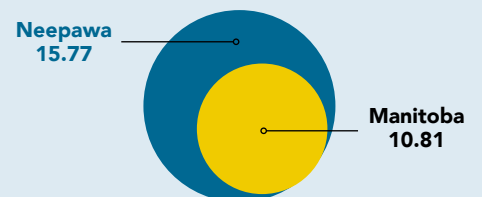


Concentration of Local Workforce:

Neepawa vs. Division 15



Neepawa vs. Manitoba

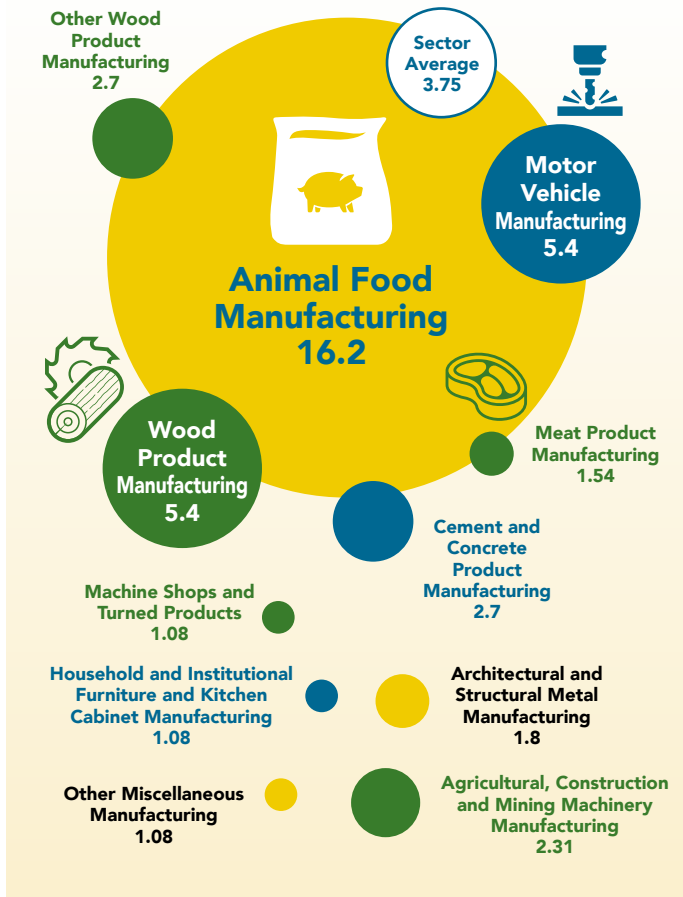


NEEPAWA MANITOBA

Business Establishment (2017)

Location Quotient (LQ) measures the concentration of **Manufacturing** businesses in **Neepawa relative to other jurisdictions**. An LQ of 1.25 and over suggests a high concentration of local activity in an industry in relation to the area with which it is being compared.

Neepawa relative to Division 15



Neepawa relative to Manitoba



Sector Trends and Outlook



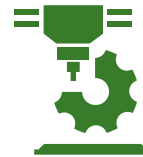
Robotics and Automation

Manufacturing productivity growth in Canada has averaged 2.8% a year since 1961, meaning fewer workers are needed to produce the same or greater output. Integration of automation and robotics in manufacturing processes will need to grow for companies to maintain their competitiveness in the global market.



Internet of Things (IoT) and Data Integration

IoT allows workers to monitor the performance of operations and processes, showcasing efficiency in real time and providing the potential for predictive analytics. The use of these devices will continue to grow as they provide manufacturers the ability to increase productivity, reduce costs, and even improve safety.



Additive Printing and Rapid Prototyping

3D printing has allowed manufacturers to reduce the time and cost it takes to test and troubleshoot parts prior to manufacturing them. It is also reducing the time and cost associated with tooling.

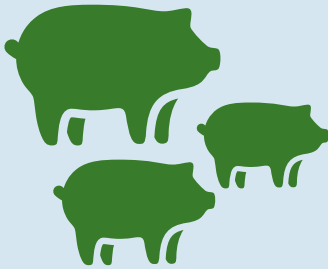
Manitoba's Protein Strategy

Manitoba will be North America's protein supplier of choice, leading Canada in sustainable protein industry growth that benefits the profitability and competitiveness of Manitoba producers, processors and the provincial economy.

Core Clusters

Food Manufacturing

is expanding across Manitoba, with much of its advantage coming from the abundant, local agriculture feedstock.



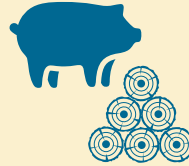
HyLife Foods

Neepawa has key strengths in food manufacturing due to the presence of the major pork processing firm HyLife. In 2017, the Province of Manitoba announced support for a \$105 million expansion of HyLife facilities.

Sector Strengths & Opportunities

Major Local Employers and Facilities

HyLife Foods & Stella Jones Inc.



Growing Regional Hub for Surrounding Communities & Farms

+1000

New Residents (2011-2016)

Near Large Cities with Key Assets & Attraction Potential:

Winnipeg – 175 km

Brandon – 72 km



Quality of Life & Affordable Living



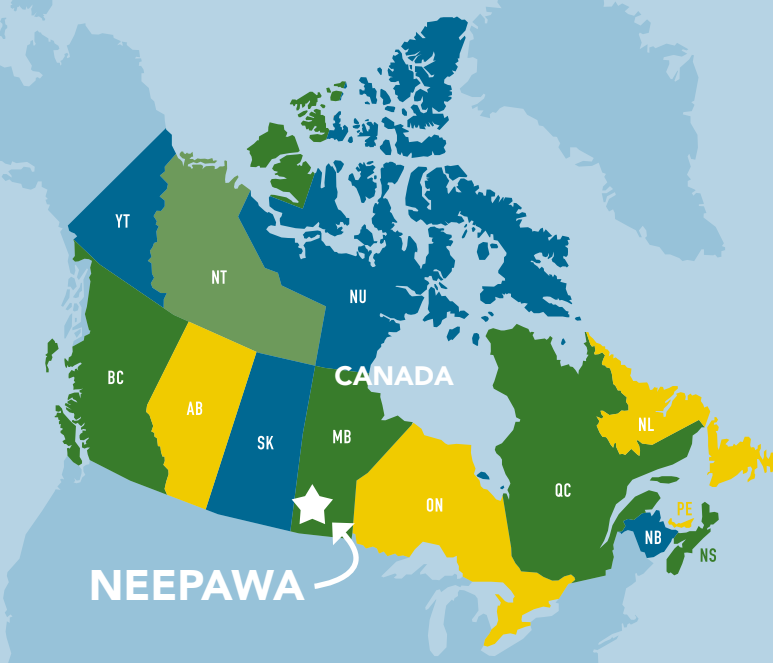
NEEPAWA QUICK FACTS

Neepawa is located in the southwestern region of Manitoba, Canada and is part of Canada Census Division 15. The community is situated at the junction of Highways 5 and 16 (Yellowhead Route), approximately 175 km west of Winnipeg.

Population (Town): 4,609 (2016)

Population (Trading Area): 21,000 (2016)

- Neepawa saw 27% growth in the last census— one of the fastest growing communities of its size in the province.
- 28% of Neepawa's population is newcomer. 25% of the population is Filipino (impact of HyLife Foods).
- CP Rail runs across the north of Neepawa with an active spur line.
- Neepawa hosts a local registered airport featuring a 3,500-foot runway to service air ambulance, crop and personal planes and small jets.



This **Industry Insights** is based on research completed in November 2018. Full text of the profile on which this fact sheet is based is available online at neepawa.ca/industry-profiles

Town of Neepawa Economic Development

Box 339, 275 Hamilton Street
Neepawa, MB R0J 1H0

Phone: 204-476-7607 Email: edo@wcgwave.ca



neepawa.ca