



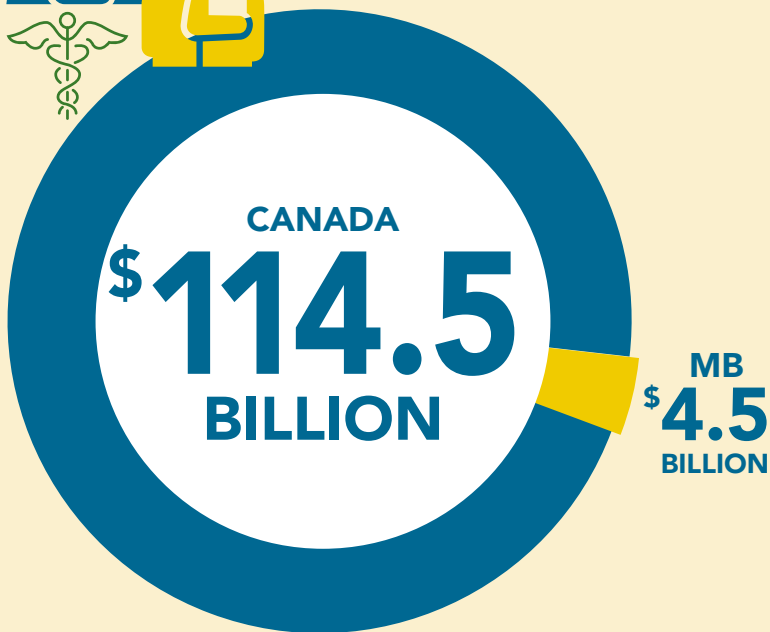
INDUSTRY SECTOR INSIGHTS

Health Care & Social Assistance





Sector Size

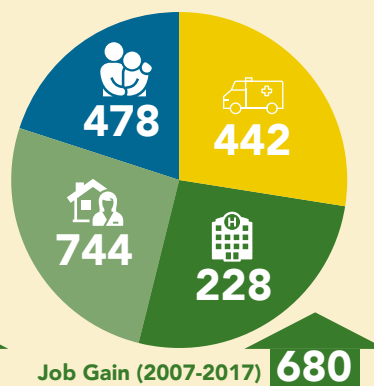
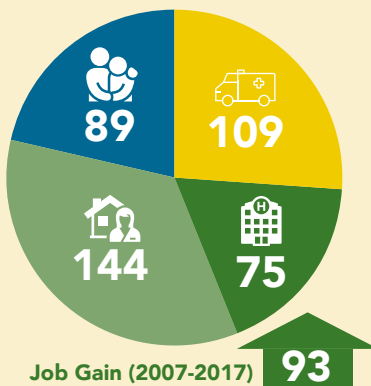


The sector contributed over **\$114.5 billion** to Canada's overall GDP in 2017. Manitoba accounted for **\$4.5 billion** of this total.

Employed Labour Force (2017)

417 Employed in Sector in Neepawa

1,892 Employed in Sector in Census Division 15



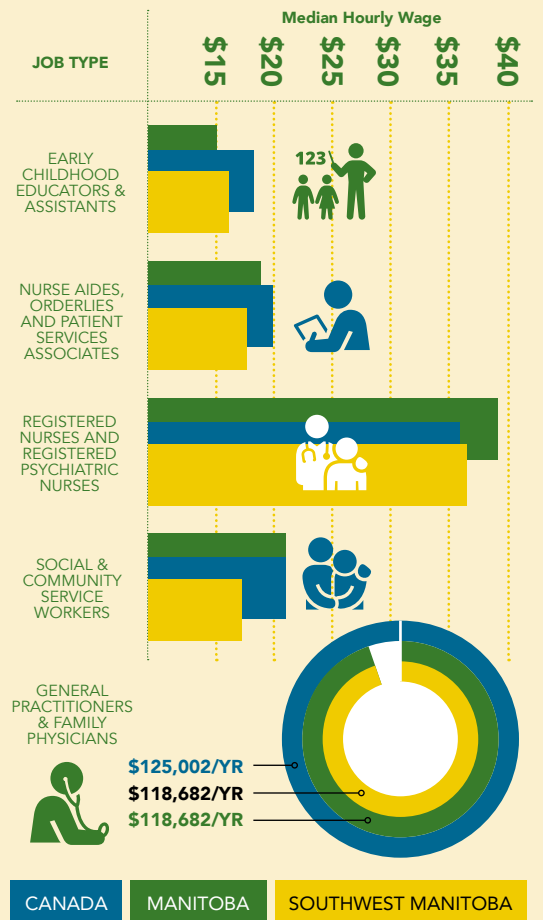
- Social Assistance
- Ambulatory Health Care Services
- Hospitals
- Nursing and Residential Care Facilities

Continued Growth

2017	\$4.54 BILLION	+2.3%
2016	\$4.44 BILLION	+1.7%
2015	\$4.37 BILLION	+1.8%
2014	\$4.29 BILLION	+0.6%
2013	\$4.27 BILLION	

The sector saw **continued growth in output from 2013 through 2017**, which was due to the essential nature of the sector and the continuing aging of Canada's population.

Wages & Salaries*

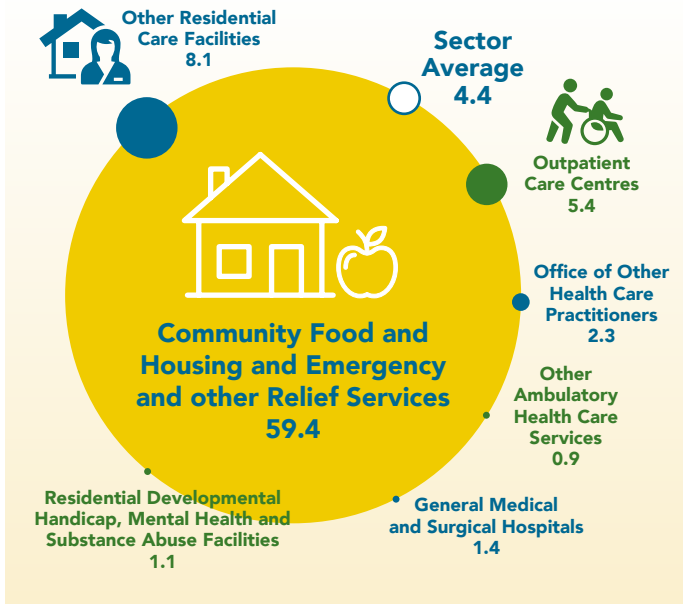


*Data for 2018

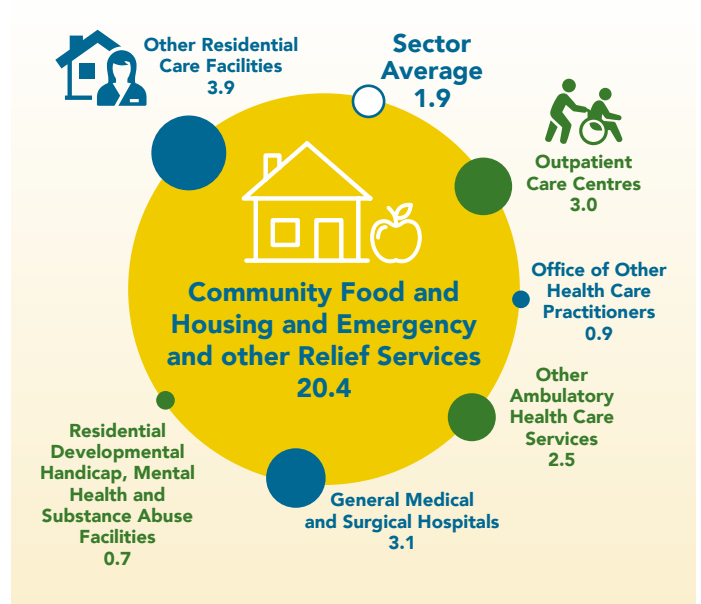
Business Establishment (2016)

Location Quotient (LQ) measures the concentration of **Health Care & Social Assistance** services in Neepawa relative to other jurisdictions. An LQ of 1.25 and over suggests a high concentration of local activity in an industry in relation to the area with which it is being compared.

Neepawa relative to Division 15



Neepawa relative to Manitoba



Sector Trends and Outlook



Aging Population

In 2012, 1 in 7 Canadians was a senior; by 2030, that number will increase to 1 in 4. This extraordinary change in our demographics presents new opportunities for Canadian society. Communities must provide adequate services to ensure a high quality of life for seniors.



Healthcare Workforce Shortage and Skills Disconnect

Workforce challenges are occurring across high paying specialty positions and low paying patient support positions. This issue is exacerbated by demand for new skills specifically in technology to support modernisation of patient care.



Internet of Things (IoT) and Data Integration

IoT technology allows individuals and medical professionals to monitor health indicators in real time. Use of these devices will continue to grow as they provide health care providers the ability to improve care remotely and reduce costs.

Health Care and Workforce Attraction



Proximity to Health Services

is an important consideration for making any residential or business location choices.



24/7
Care



38
Beds

Home to Neepawa Health Centre

provides residents with access to a range of medical services in the community.

20%
Age 65+

10%
Age 55-64

Ageing Population

may require additional home care and senior-specific medical care.

Core Clusters

Government Support/ Presence of Major Public Sector Employer



Neepawa Health Centre

Operated by the Prairie Mountain Health (PMH)—one of five regional health authorities in the province—Neepawa Health Centre is a regional service provider and is a cornerstone for attracting workforce and residents.

Sector Strengths & Opportunities

Major Local Employers and Facilities

Touchwood Park
and the
Neepawa
Health Centre



Growing Regional Hub for Surrounding Communities & Farms

+1000

New Residents (2011-2016)

Near Large Cities with Key Assets & Attraction Potential:

Winnipeg –
175 km
Brandon – 72 km



Quality of Life & Affordable Living



NEEPAWA QUICK FACTS

Neepawa is located in the southwestern region of Manitoba, Canada and is part of Canada Census Division 15. The community is situated at the junction of Highways 5 and 16 (Yellowhead Route), approximately 175 km west of Winnipeg.

Population (Town): 4,609 (2016)

Population (Trading Area): 21,000 (2016)

- Neepawa saw 27% growth in the last census—one of the fastest growing communities of its size in the province.
- 28% of Neepawa's population is newcomer. 25% of the population is Filipino (impact of HyLife Foods).
- CP Rail runs across the north of Neepawa with an active spur line.
- Neepawa hosts a local registered airport featuring a 3,500-foot runway to service air ambulance, crop and personal planes and small jets.

This **Industry Insights** is based on research completed in November 2018. Full text of the profile on which this fact sheet is based is available online at neepawa.ca/industry-profiles

Town of Neepawa Economic Development

Box 339, 275 Hamilton Street
Neepawa, MB R0J 1H0

Phone: 204-476-7607 Email: edo@wcgwave.ca



neepawa.ca